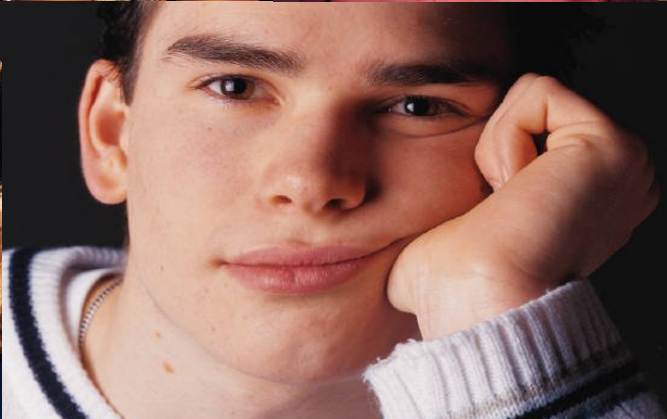
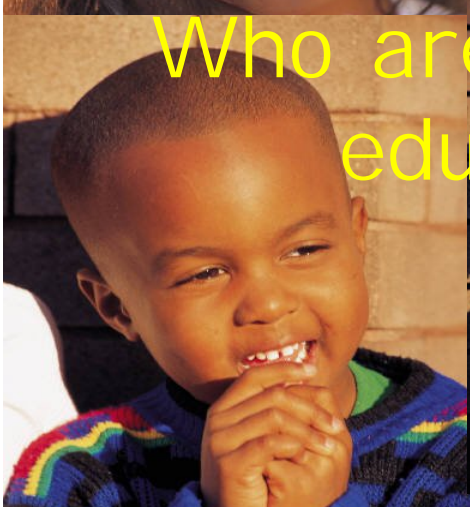




Who are the students receiving special education in South Kingstown?



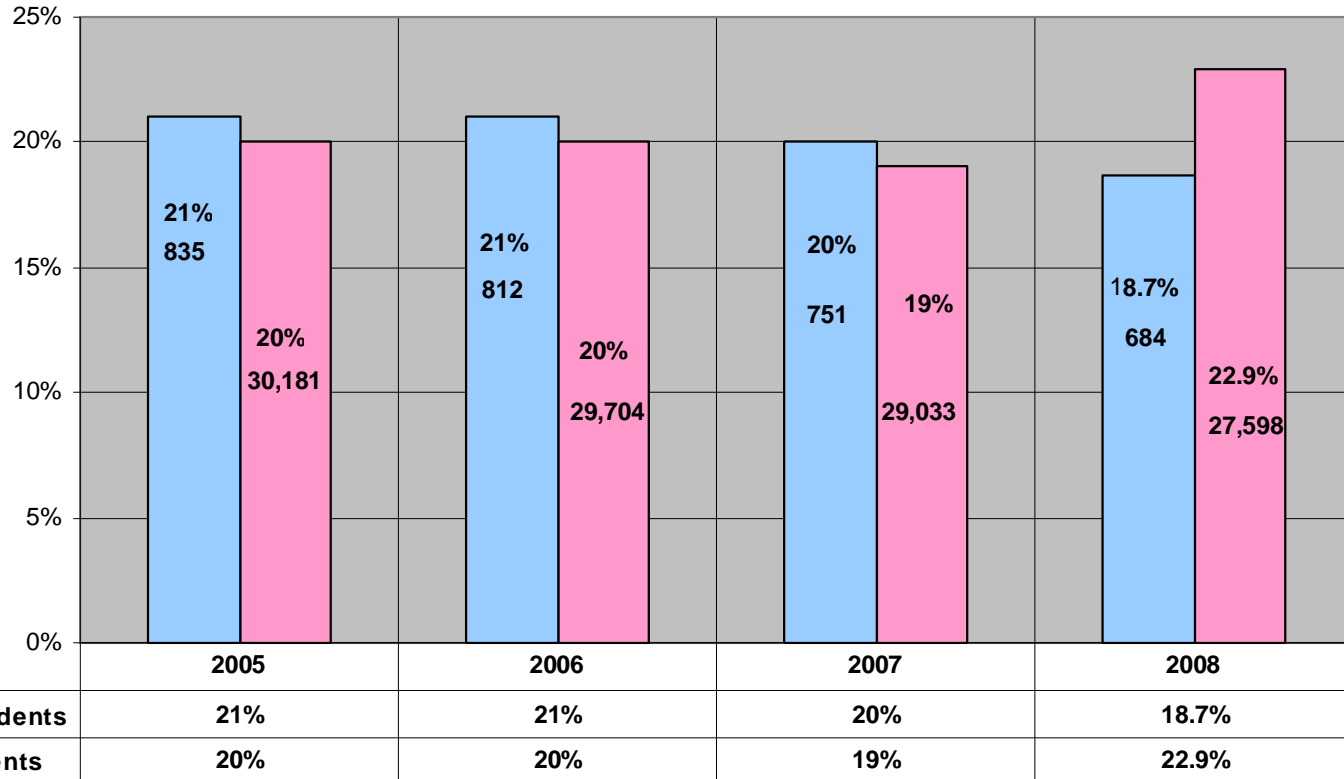
Meet our students

- How many are there?
- What are the disabilities?
- Where are they?
- What are the demographics?
- What does parent engagement look like?
- How are they performing?
- Improvements, challenges and forging ahead

How many are
there?



IEP Students - District vs. State - Ages 3 - 21



Portsmouth				17.4%
Chariho				10.9%
North Kingstown				16.9%
Lincoln				17.5%

Assumptions

Assumptions

Assumptions

Assumptions

Assumptions

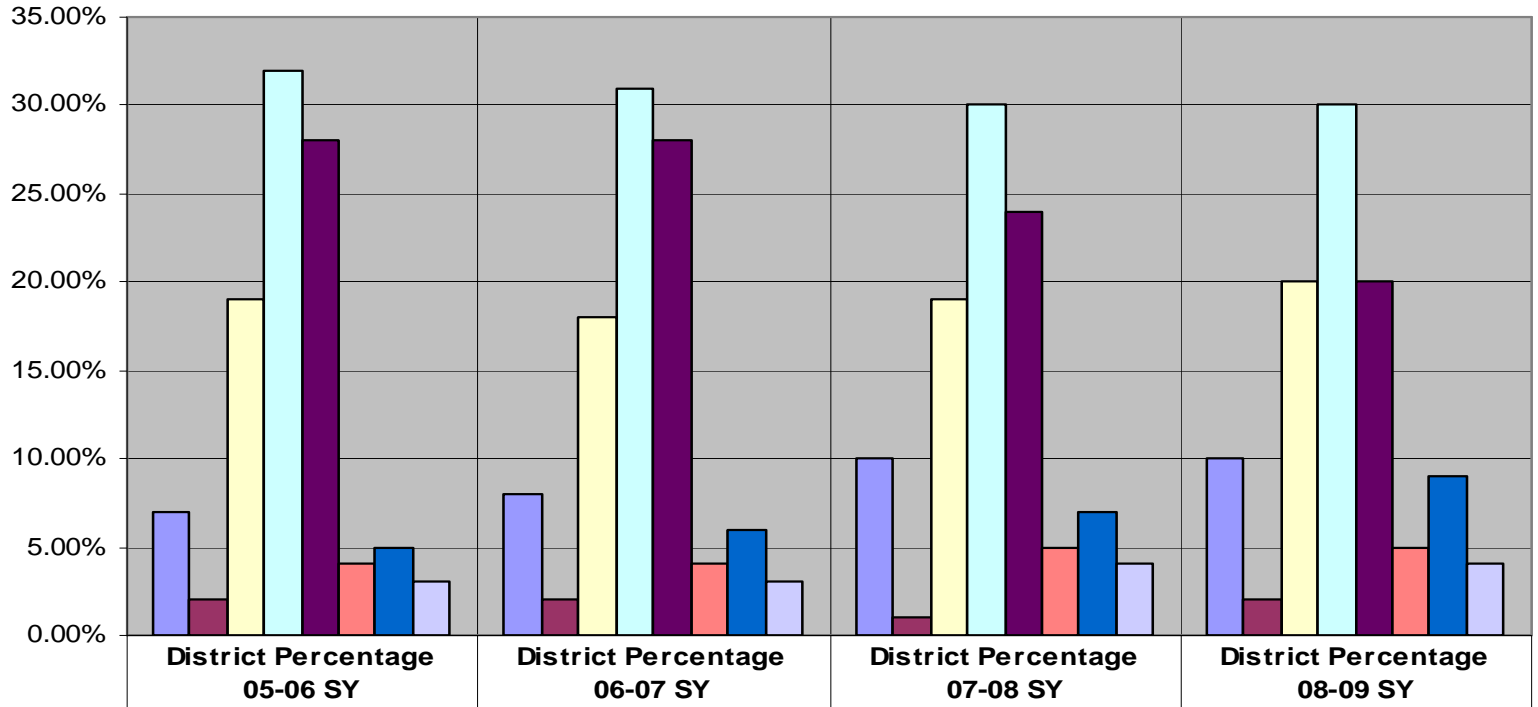
What are the disabilities?

There are 14 disability categories under federal law

Mental Retardation
Hearing Impairment
Deafness
Speech/Language
Impairment
Visual Impairment
Emotional Disturbance
Orthopedic Impairment

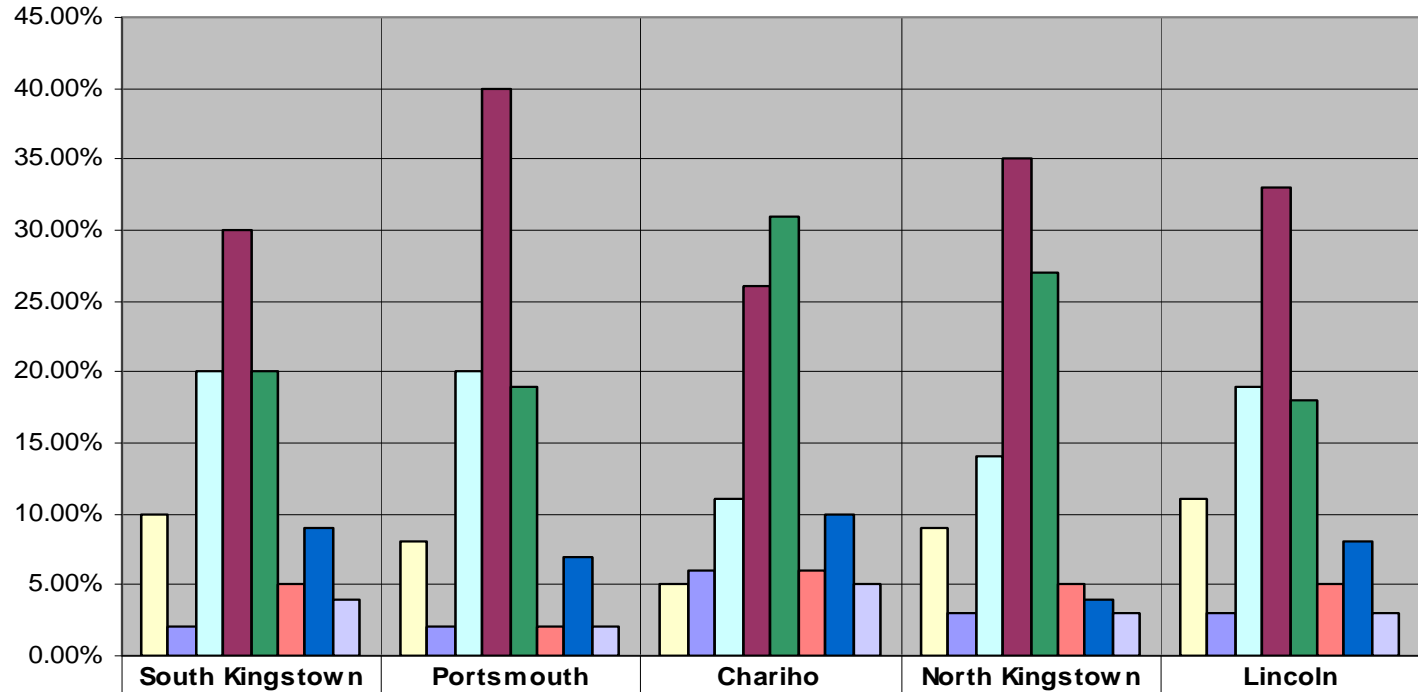
Other Health Impairment
Specific Learning
Disability
Deaf-Blindness
Multiple Disabilities
Autism
Traumatic Brain Injury
Developmental Delay

District - Disability Category



Emotional Disturbance	7.00%	8.00%	10.00%	10.00%
Mental Retardation	2.00%	2.00%	1.00%	2.00%
Other Health Impaired	19.00%	18.00%	19.00%	20.00%
Learning Disabled	32.00%	31.00%	30.00%	30.00%
Speech/Language Impaired	28.00%	28.00%	24.00%	20.00%
Developmentally Delayed	4.00%	4.00%	5.00%	5.00%
Autistic Spectrum	5.00%	6.00%	7.00%	9.00%
Other	3.00%	3.00%	4.00%	4.00%

Students by Disability Category - December 2008 - Ages 3 - 21



Emotional Disurbance	10.00%	8.00%	5.00%	9.00%	11.00%
Mental Retardation	2.00%	2.00%	6.00%	3.00%	3.00%
Other Health Impaired	20.00%	20.00%	11.00%	14.00%	19.00%
Specific Learning Disability	30.00%	40.00%	26.00%	35.00%	33.00%
Speech/Language Impairment	20.00%	19.00%	31.00%	27.00%	18.00%
Developmental Delay	5.00%	2.00%	6.00%	5.00%	5.00%
Autism Spectrum Disorder	9.00%	7.00%	10.00%	4.00%	8.00%
Other	4.00%	2.00%	5.00%	3.00%	3.00%

Where are the students?



PROGRAM PLACEMENT OF SPECIAL EDUCATION STUDENTS (Ages 6 - 21 Only)

	80% to 100% OF TIME IN GENERAL EDUCATION				LESS THAN 40% OF TIME IN GENERAL EDUCATION				SEPARATE PLACEMENTS (day school / residential / homebound/hospital)			
	Dec. 2004	Dec. 2005	Dec. 2006	Dec. 2007	Dec. 2004	Dec. 2005	Dec. 2006	Dec. 2007	Dec. 2004	Dec. 2005	Dec. 2006	Dec. 2007
SOUTH KINGSTOWN	52%	55%	54.43%	72.66%	13%	14%	11.77%	5.50%	2.38%	1.40%	3.60%	4.90%
STATE	60%	64%	62.69%	74.57%	19%	19%	18.54%	11.01%	4.66%	3.92%	4.58%	3.69%
PORTSMOUTH				81.19%				4.36%				5.54%
CHARIHO				70.21%				14.25%				1.30%
NORTH KINGSTOWN				62.98%				9.14%				4.70%
LINCOLN				81.50%				6.73%				3.18%

Other Lenses to consider.....



- Poverty
- Race/ethnicity

STUDENTS RECEIVING FREE & REDUCED LUNCH

	05-06 SY as of 12-1-05	Percentage	Notes
District (3,927 Students)	448	11%	11% of the 3,927 Students are on F & R lunch
IEP Students (of the 448 Students)	184	41%	41% of the 448 students on F & R lunch have IEPs
F & R of IEP Population (835) Students)	184	22%	22% of the 835 students on IEPs have F & R lunch

	06-07 SY as of 12-1-06	Percentage	Notes
District (3,860 Students)	496	13%	13% of the 3,860 students are on F & R lunch
IEP Students (of the 496 Students)	198	40%	40% of the 496 students on F & R lunch have IEPs
F & R of IEP Population (812 Students)	198	24%	24% of the 812 students on IEPs have F & R lunch

	07-08 SY as of 12-1-07	Percentage	Notes
District (3,677 Students)	567	15%	15% of the 3,677 students are on F & R lunch
IEP Students (of the 567 Students)	187	33%	33% of the 567 students on F & R lunch have IEPs
F & R of IEP Population (751 Students)	187	25%	25% of the 751 students on IEPs have F & R lunch

	08-09 SY as of 11-3-08	Percentage	Notes
District (3,718 Students)	575	15%	15% of the 3,718 students are on F & R lunch
IEP Students (of the 575)	204	35%	35% of the 575 students on F & R lunch have IEPs
F & R of IEP Population (702 Students)	204	29%	29% of the 702 students on IEP have F & R lunch

Criteria for Determining Significant Disproportionality in Special Education

- Risk levels for a racial group are 1% or higher than national risk for all students
- Risk ratio shows risk for the group in the district is at least 2.5 times combined risk for all students in the nation
- Must be at least 10 students in the category
- Specific criteria must be met for two consecutive years

LEA must use 15% of IDEA Part B funds for early intervening services for general ed students K-12

ALL Disabilities National Risk 9.08%

IEP #	Asian	Black	Hispanic	Native American	White
2006	4	41	24	62	591
2007	3	37	24	57	552
2008	3	35	26	52	500

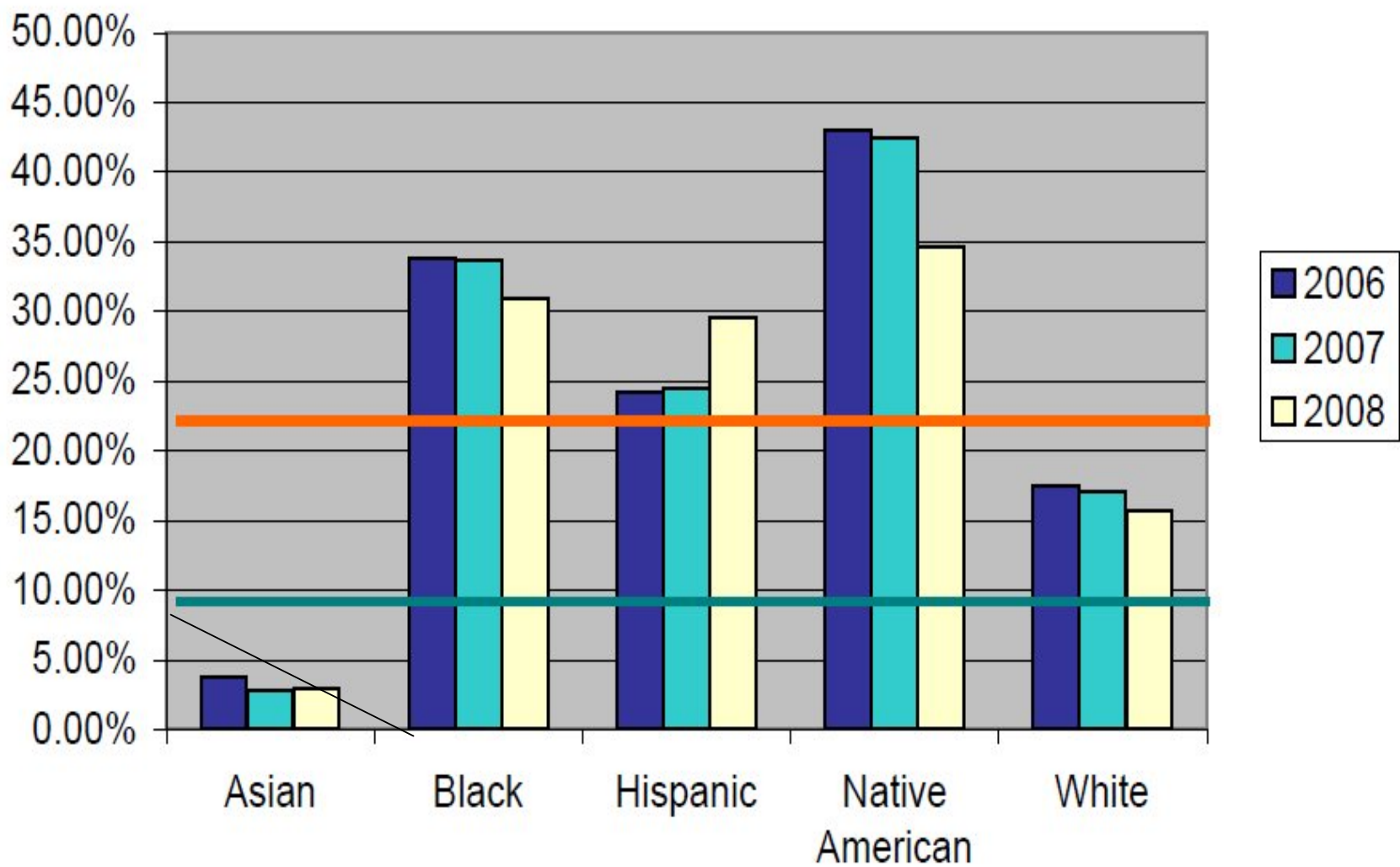
Enrollment #

	Asian	Black	Hispanic	Native American	White
2006	107	121	99	144	3377
2007	104	110	98	134	3220
2008	101	113	88	150	3192

Risk

	Asian	Black	Hispanic	Native American	White
2006	3.74%	33.88%	24.24%	43.06%	17.50%
2007	2.88%	33.64%	24.49%	42.54%	17.14%
2008	2.97%	30.97%	29.55%	34.67%	15.66%

South Kingstown Risk All Disabilities by Race/Ethnicity



LD

National Risk

4.05%

IEP #	Asian	Black	Hispanic	Native American	White
2006	1	24	9	29	192
2007	1	17	9	26	171
2008	1	15	8	23	161

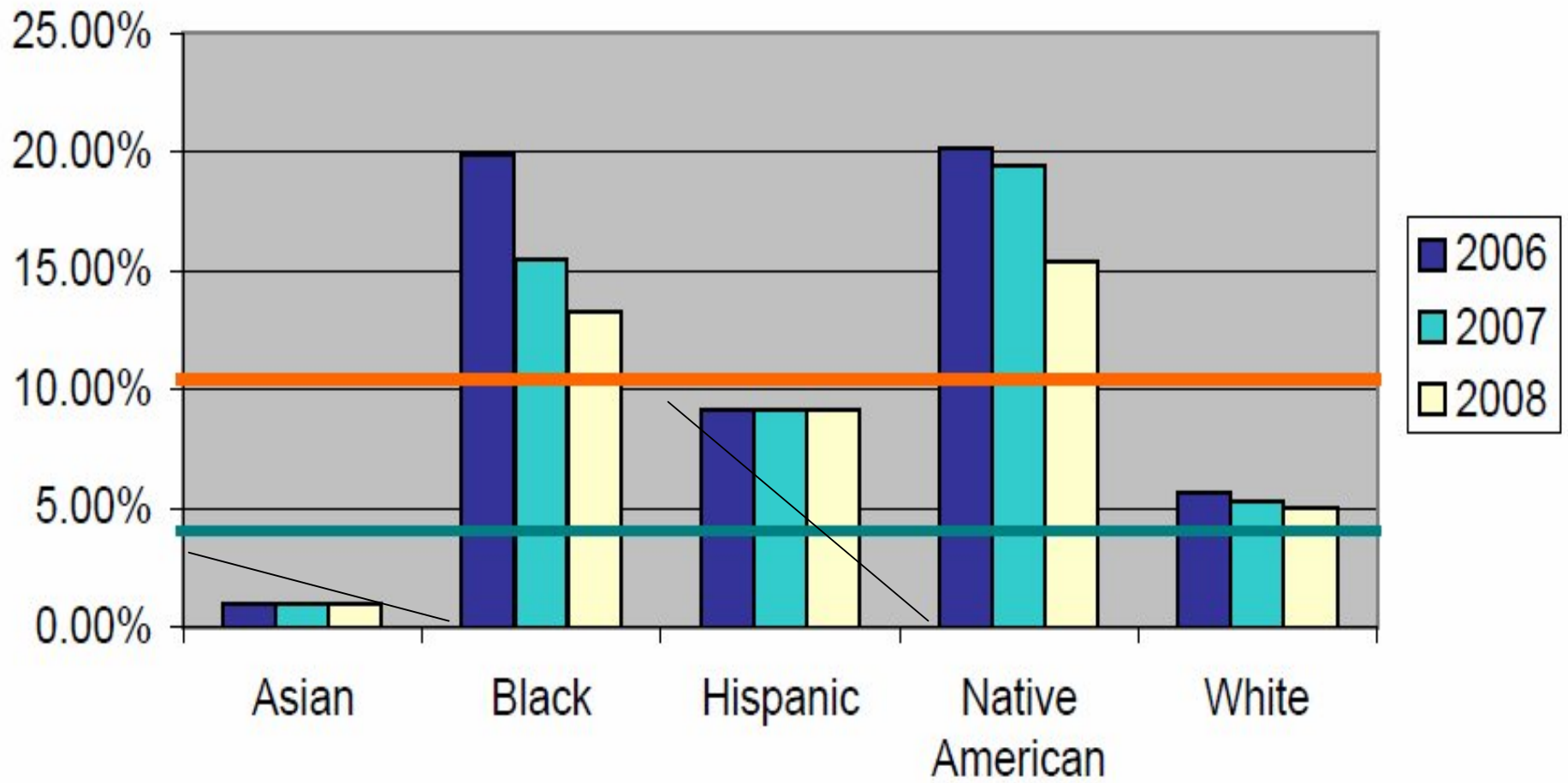
Enrollment

	Asian	Black	Hispanic	Native American	White
2006	107	121	99	144	3377
2007	104	110	98	134	3220
2008	101	113	88	150	3192

Risk

	Asian	Black	Hispanic	Native American	White
2006	0.93%	19.83%	9.09%	20.14%	5.69%
2007	0.96%	15.45%	9.18%	19.40%	5.31%
2008	0.99%	13.27%	9.09%	15.33%	5.04%

LD Risk by Race/Ethnicity



OHI

National Risk 0.90%

IEP #	Asian	Black	Hispanic	Native American	White
2006	0	5	4	16	121
2007	0	7	5	13	116
2008	0	7	5	9	119

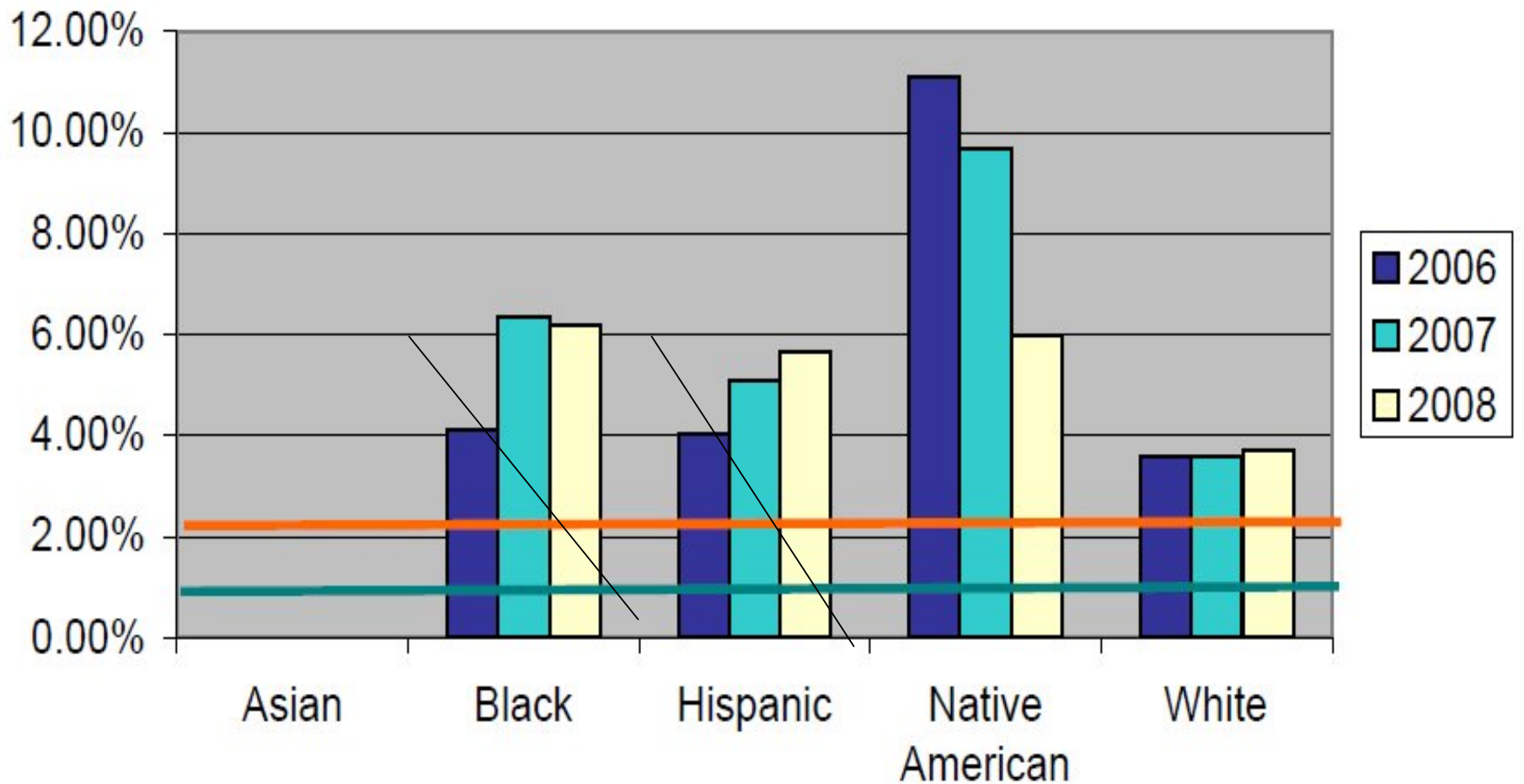
Enrollment #

	Asian	Black	Hispanic	Native American	White
2006	107	121	99	144	3377
2007	104	110	98	134	3220
2008	101	113	88	150	3192

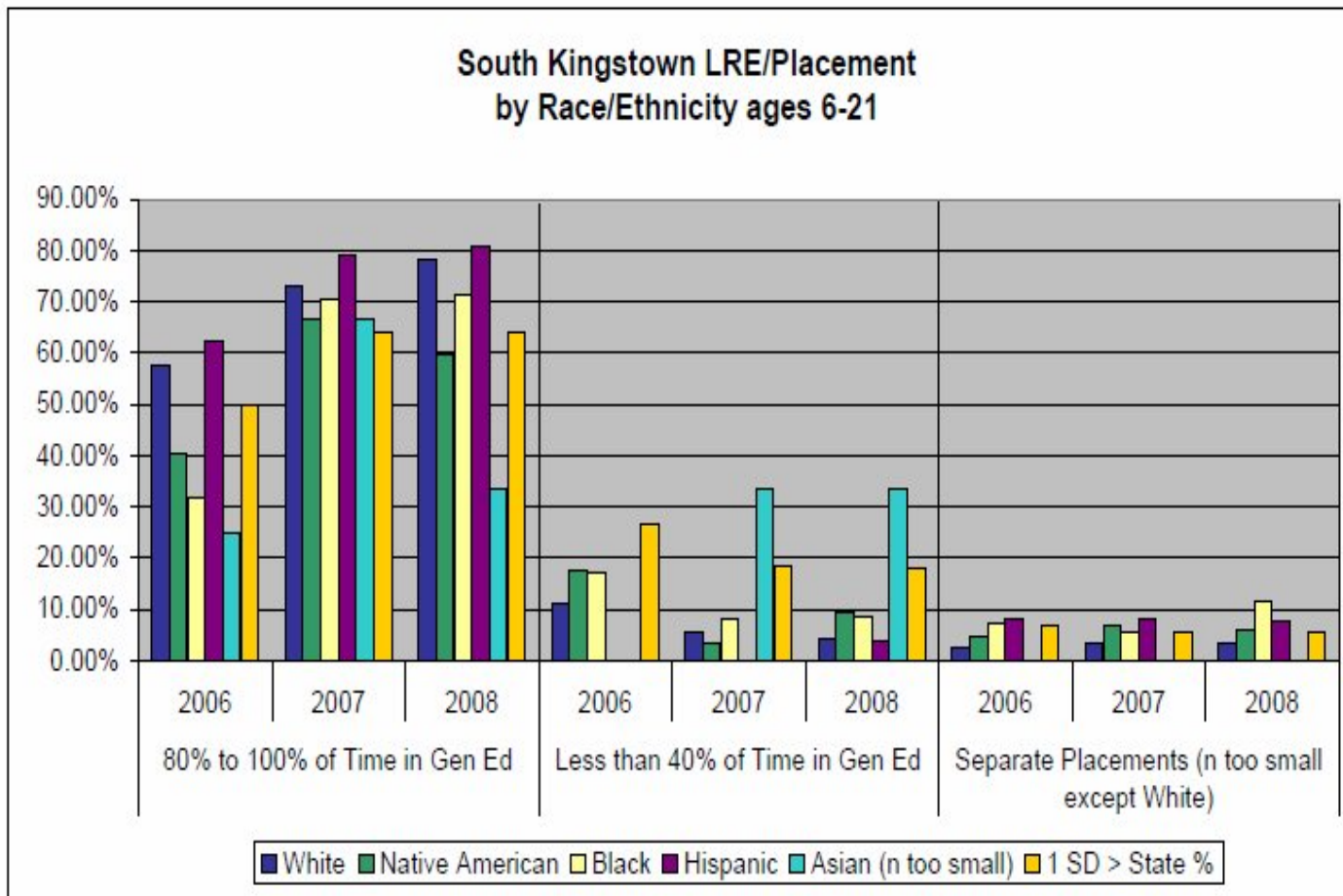
Risk

	Asian	Black	Hispanic	Native American	White
2006	0.00%	4.13%	4.04%	11.11%	3.58%
2007	0.00%	6.36%	5.10%	9.70%	3.60%
2008	0.00%	6.19%	5.68%	6.00%	3.73%

South Kingstown OHI Risk by Race/Ethnicity



	80% to 100% of Time in Gen Ed			Less than 40% of Time in Gen Ed			Separate Placements (n too small except White)		
	2006	2007	2008	2006	2007	2008	2006	2007	2008
White	57.36%	73.19%	78.40%	11.34%	5.62%	4.40%	2.71%	3.62%	3.60%
Native American	40.32%	66.67%	59.62%	17.74%	3.51%	9.62%	4.84%	7.02%	5.77%
Black	31.71%	70.27%	71.43%	17.07%	8.11%	8.57%	7.32%	5.41%	11.43%
Hispanic	62.50%	79.17%	80.77%	0.00%	0.00%	3.85%	8.33%	8.33%	7.69%
Asian (n too small)	25.00%	66.67%	33.33%	0.00%	33.33%	33.33%	0.00%	0.00%	0.00%
1 SD > State %	49.63%	64.12%	64.11%	26.67%	18.36%	17.84%	6.84%	5.50%	5.53%



What does Parent Engagement Look Like?



The Special Education Statewide Parent Survey

Measures school efforts to involve parents as one means of improving services to children with disabilities via a RIDE direct mailing to all parents of RI students with disabilities

2008 Results

–Survey Participation Rate:

- Statewide Average = 17%
- South Kingstown Average = 19.83%

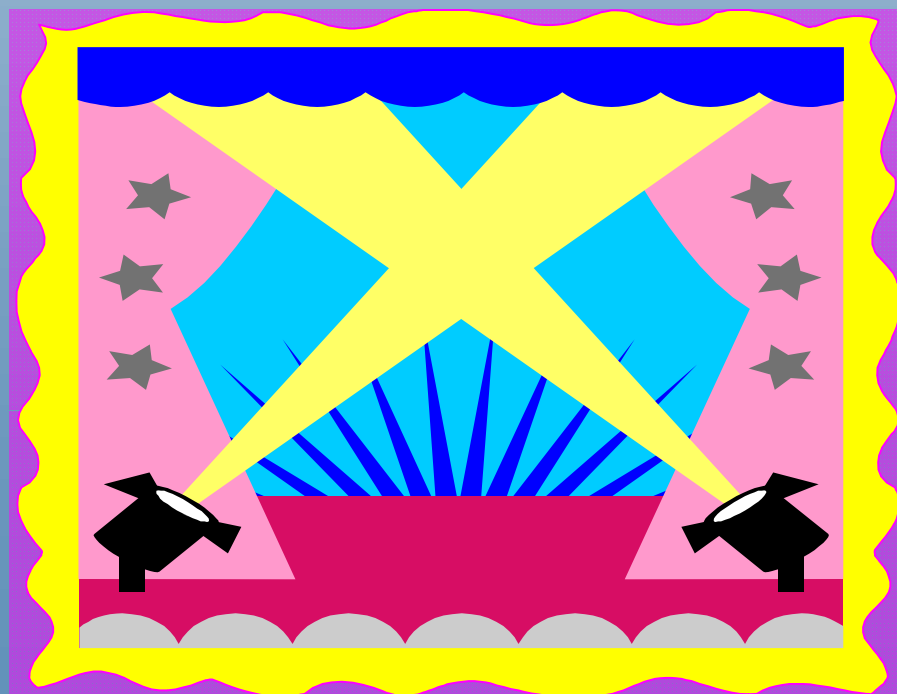
–% of parents with a child receiving special education who report school parent involvement efforts at or above the standard:

- Statewide = 28%
- South Kingstown = 32%

SELAC IEP Survey

- To develop an understanding of parent perceptions of IEP Meetings
- Administered during 2007-2008
- Survey Results:
 - Response Rate = 17% (82% repeat IEP, 12% first IEP)
 - Positive Response Pattern averaging 97%
 - Range from 93% (Were you asked your opinion of how well services meet child's needs?)
 - To 100% (Were reports and IEP written understandably?)

Students with Disabilities and Special Needs in the NCLB Spotlight



NECAP Reading Scores - percentage achieving proficiency

07 School year	District overall	IEP only	Cohort IEP	State IEP Only	08 School year	District overall	IEP only	Cohort IEP	State IEP Only
Elementary	81%	47%	38%	32%		80%	46%	41%	32%
Middle	84%	39%	35%	25%		84%	40%	34%	27%
High	81%	28%	33%	24%		86%	33%	30%	29%

NECAP Math Scores - percentage achieving proficiency

07 School year	District overall	IEP only	Cohort IEP	State IEP Only	08 School year	District Overall	IEP only	Cohort IEP	State IEP Only
Elementary	78%	46%	37%	30%		81%	51%	42%	31%
Middle	80%	27%	24%	15%		80%	36%	27%	17%
High	42%	8%	7%	3%		48%	0%	9%	5%

IEP Results Across Three Grades

Percentage Achieving Proficiency

	Students with IEPs					
	Reading			Math		
	2006	2007	2008	2006	2007	2008
3 to 4 to 5	44	38	47	51	35	47
4 to 5 to 6	40	44	41	51	49	50
5 to 6 to 7	34	44	45	43	34	29
6 to 7 to 8	35	41	35	29	26	29
Average	38	42	42	44	36	39



Post Secondary Outcomes



New data collection system to look at what students with special needs are doing one year after exiting school

- Response Rates to Interactive survey
 - State = 51% South Kingstown = 53.49%
- Engagement Rate
 - State = 79% South Kingstown = 87%

Progress,
challenges and
forging ahead

